



Convex spherical saddles



View product: <http://industrial.lukas.com>

All-round protection for cylinder pistons.

Protect cylinders and the parts that you move against accidental damage. LUKAS convex spherical saddles offer the right solution for every application.

For further information on this product, please contact us directly.

Phone number: + 49 9131 698 468

Fax number: + 49 9131 698 303

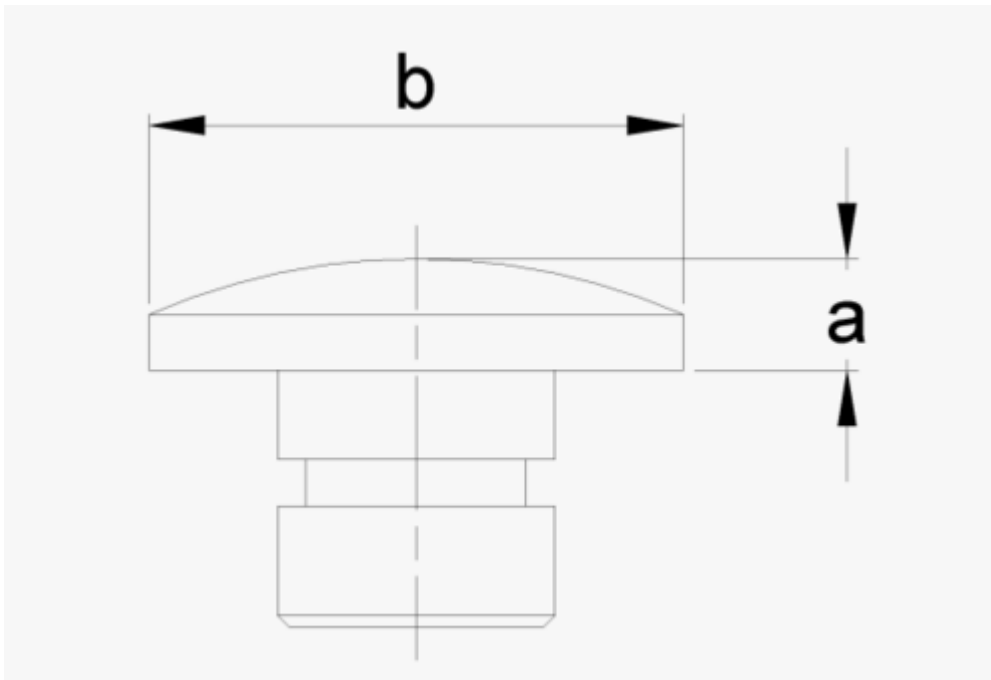
E-mail: lukas.info@idexcorp.com

Find nearest contact:

industrial.lukas.com/Service/Find+a+contact.html

 **Convex spherical saddles**

Technical data



 **Convex spherical saddles**

Technical data

type (type)	order no.	A (mm)	B (Ø mm)	weight (kg)
LF. 6, LF. 10	84128/1509	15	32	0.1
LF. 16	84128/1513	10	48	0.35
LF. 25	84128/1514	15	60	0.45
HL... 9, HL... 14	84128/1509	15	32	0.1
HL... 22	84128/1513	10	48	0.35
HL... 35	84128/1514	15	60	0.45
ACM 10/...	84128/1509	15	32	0.1
ACM 25/...	84128/1513	10	48	0.35



Germany's finest hydraulics

LUKAS – the name in hydraulic tools.

High-quality hydraulic tools for industrial applications: LUKAS has developed and produced them in Germany since 1948. Wherever you need to move heavy loads, with our products you have a strong partner at your side. Only LUKAS offers these advantages:

German quality

With few exceptions, LUKAS products are developed and manufactured from start to finish in Germany. That is the only way we can maintain our high standard of quality and monitor our entire production chain. Our highly skilled team works with great attention to detail - and is always a step closer to our customers.



The original

In 1948, LUKAS was the first brand to offer high-quality hydraulic tools for industrial applications. Since then our engineers have always kept a step ahead of developments so we can offer the guaranteed best quality.

Unique customer focus

LUKAS is the only manufacturer to offer you customer-oriented direct sales. Our experienced sales team can give you excellent advice because they understand your needs and can offer you tailored solutions.